

# **THE ROLE OF SOCIAL SERVICES IN SWEDEN IN TIMES OF DISASTERS**

**CARIN BJÖRNGREN CUADRA  
SOCIAL SERVICES IN TIMES OF DISASTER  
MULTIDISCIPLINARY NORDIC SYMPOSIUM  
NORDIC HOUSE, REYKJAVÍK, ICELAND  
MAY 4-5 2015**



**MALMÖ UNIVERSITY**



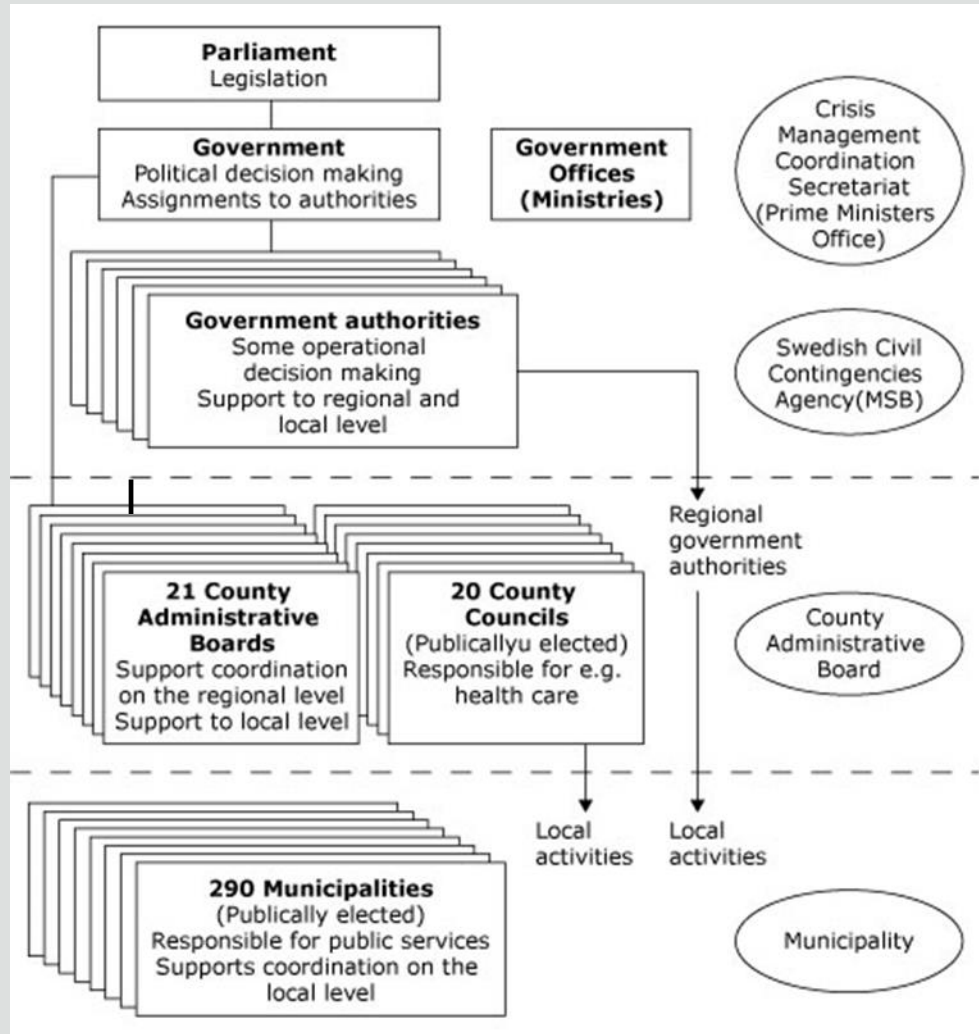
# OUTLINE

- The contingency system as the context
- The perspective of social work
- Challenges ahead
- Summary
  - No clear picture
  - An evolving area and work in progress

Ministry of Health and Social Affairs

The Board of Health and Welfare (Social Ministry)

The Public Social Service



Ministry of Justice  
Minister of Home Affairs

National

Regional

Local

Browser address bar: <https://www.msb.se/en/About-MSB/>

Search bar:  Search

MSB Swedish Civil Contingencies Agency

Navigation menu: Home, About MSB, Prevention, Training / Exercises, Operations, Products

You are here: [Home](#) / [About MSB](#)

**About MSB**

- > Contact the MSB
- > Crisis Management in Sweden
- > International co-operation
- > Legislative areas
- > Organization
- > Research
- > Standardization work
- > Vision, concept and cornerstone

## MSB – Swedish Civil Contingencies Agency

The MSB is responsible for issues concerning civil protection, public safety, emergency management and civil defence as long as no other authority has responsibility. Responsibility refers to measures taken before, during and after an emergency or crisis

We work

- via knowledge enhancement, support, training, exercises, regulation, supervision and our own operations
- in close cooperation with the municipalities, county councils, other authorities, the private sector and various organisations
- to achieve greater security and safety at all levels of society, from local to global

Customize your shortcuts by telling us who you are!

> Let us know!

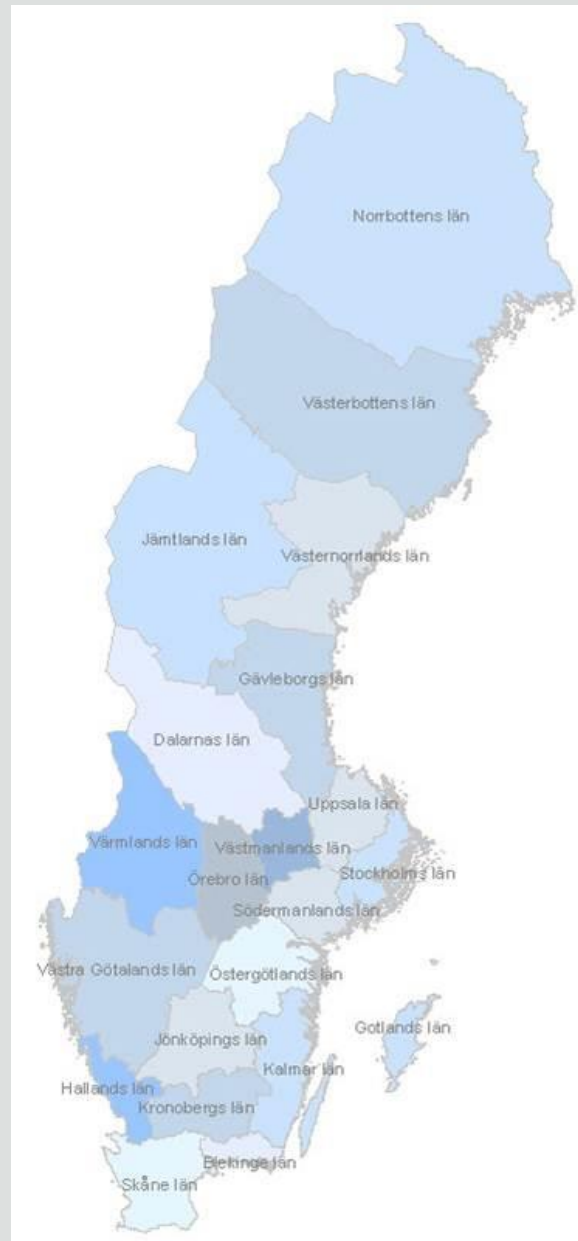
– Minimize    ✕ Change group

System tray: 12:34 2015-04-28

# KEY ASPECTS

- Whole of society approach
- The objective; to prevent, respond and recover
- All-hazards plus approach
  
- Three principle
  - responsibility
  - similarity
  - proximity

# THE COUNTY ADMINISTRATIVE BOARDS

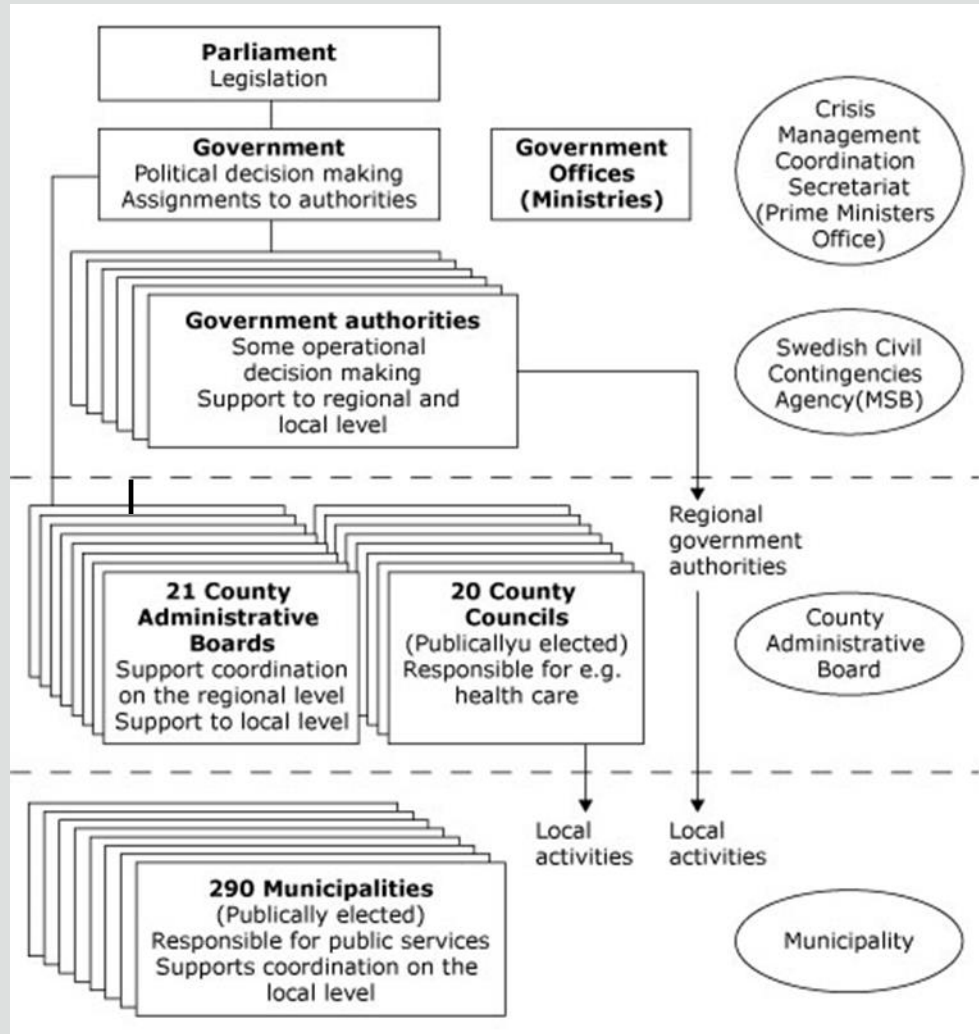


**MALMÖ UNIVERSITY**

Ministry of Health and Social Affairs

The Board of Health and Welfare (Social Ministry)

The Public Social Service



Ministry of Justice  
Minister of Home Affairs

National

Regional

Local



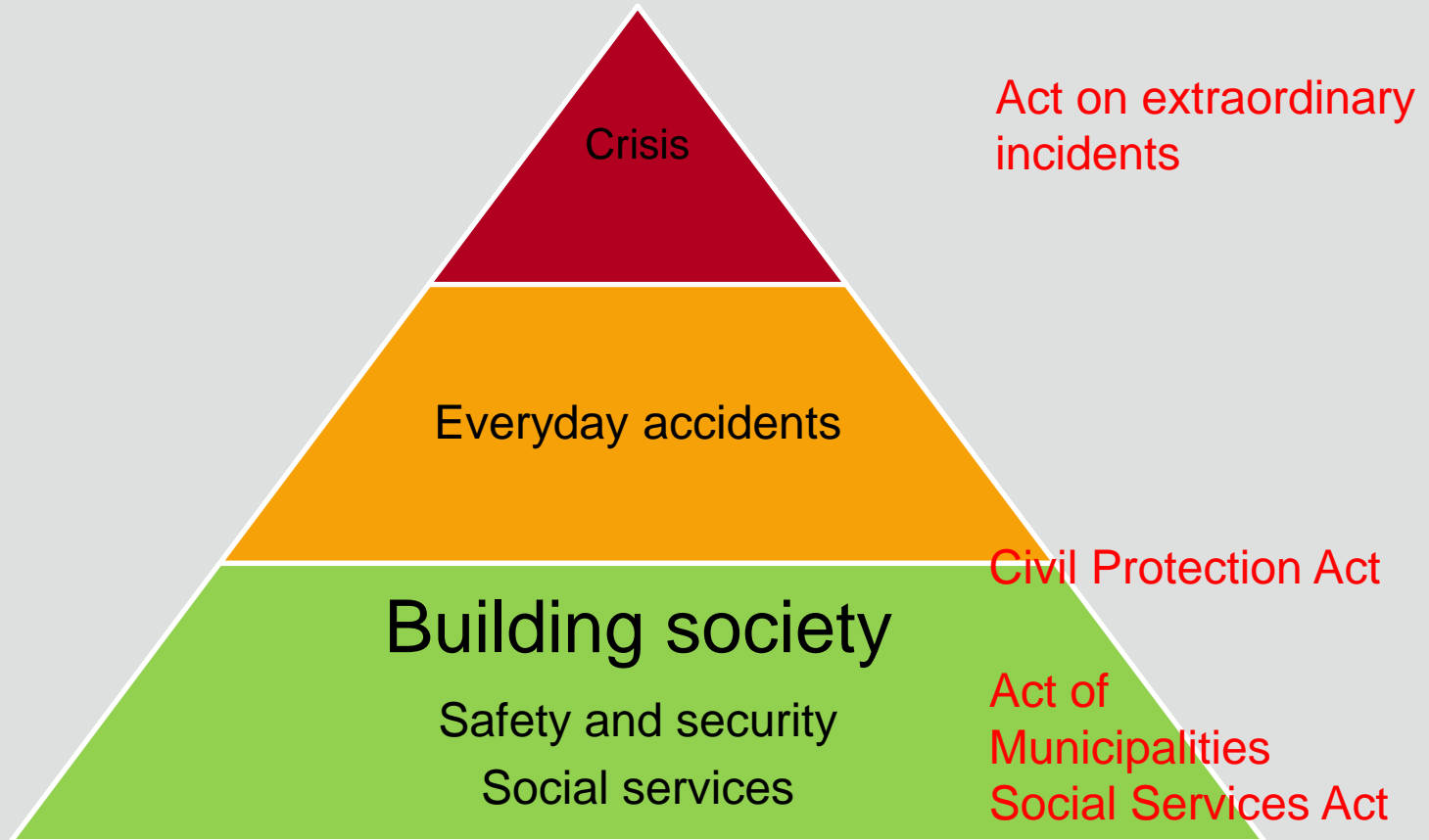
# KEY ASPECTS - REGIONAL LEVEL

- The County Administrative Boards
  - responsible for coordinating civil emergency planning activities, such as exercises, risk and vulnerability analyses, and acting as a clearing house between public and private partners within their geographic area (SFS 2006:942)
  - contingency plans in place to handle situations before, during and after an emergency
  - provide support and supervise the municipalities
  - coordinate the relevant measures with relevant actors (including private sector) at local and regional and provide support in order to maintain the level of responsibility during crisis.

# KEY ASPECTS – LOCAL LEVEL

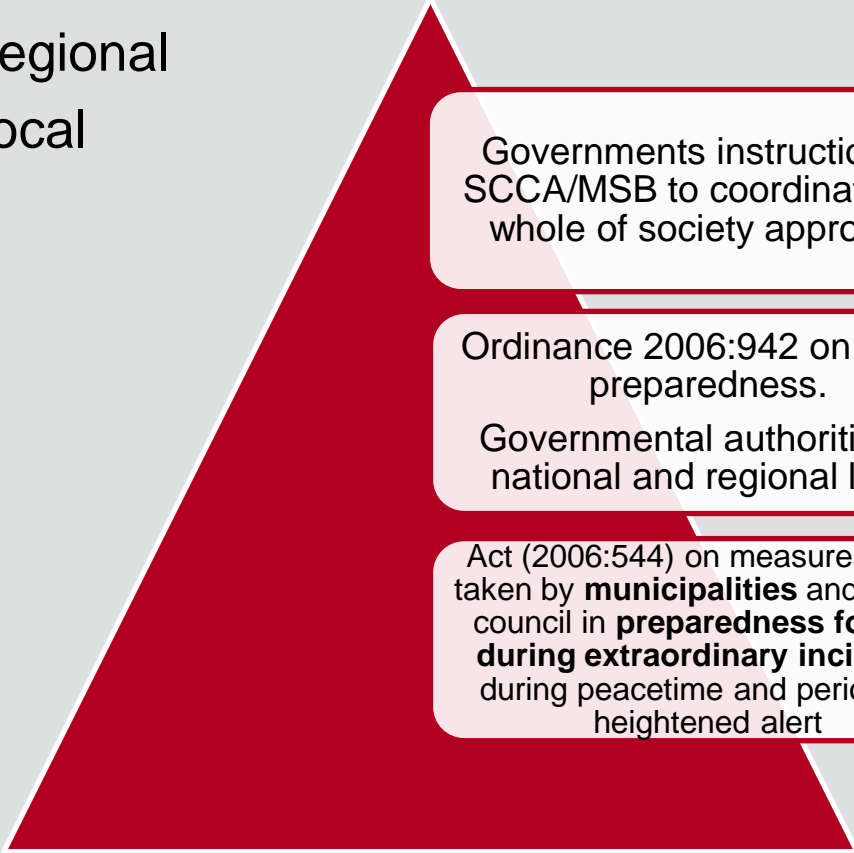
- The municipalities
  - conduct risk- and vulnerability analysis
  - make contingency plans and be prepared
  - responsibility for their geographic area (coordinate)
  - education and exercises
  - report

# THE MUNICIPALITIES' PERSPECTIVE



# THE LEGAL CONTEXT

- National
- Regional
- Local



Governments instruction to SCCA/MSB to coordinate the whole of society approach

Ordinance 2006:942 on Crisis preparedness.  
Governmental authorities at national and regional level

Act (2006:544) on measures to be taken by **municipalities** and county council in **preparedness for and during extraordinary incidents** during peacetime and periods of heightened alert

# THE ROLE OF SOCIAL SERVICES

- ambiguous picture
  - included / excluded
  - R&V analysis
- psycho-social support and individual crisis management
- case management tradition
- structurally orientated
  - being well informed of living conditions
  - active part in planning of society.
- challenges
  - diversification of service providers
  - de-institutionalisation



# THE ROLE OF SOCIAL SERVICES

- an evolving process
- at the agenda
  - SALAR
  - The Board of Health and Welfare
  - The Social Ministry
  - MSB











# THANK YOU!

[carin.cuadra@mah.se](mailto:carin.cuadra@mah.se)

